



Energy Efficiency Rating		
	Current	Potential
Very energy efficient - lower running costs		
(92 plus) <b>A</b>		
(81-91) <b>B</b>		
(69-80) <b>C</b>		75
(55-68) <b>D</b>	63	
(39-54) <b>E</b>		
(21-38) <b>F</b>		
(1-20) <b>G</b>		
Not energy efficient - higher running costs		
<b>England &amp; Wales</b>	EU Directive 2002/91/EC	

CALL US ON 01298 214441 OR EMAIL [sales@crowtherkey.co.uk](mailto:sales@crowtherkey.co.uk)

# Crowther|Key

## SALES

£169,995

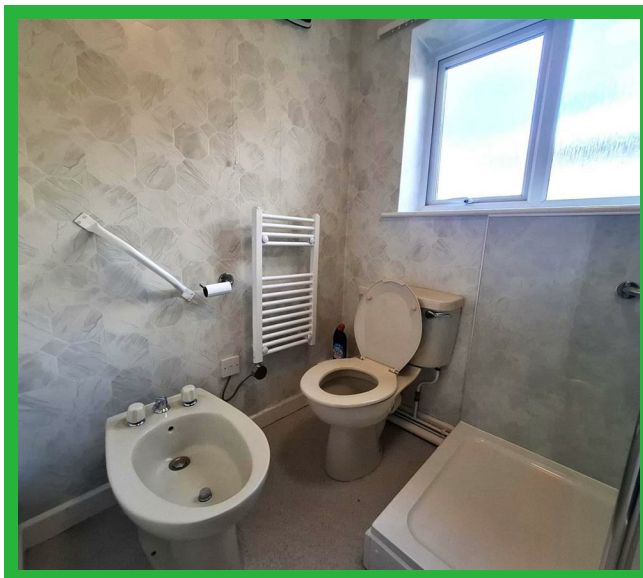
2

1



Flat 2 3 Silverlands Park  
Buxton SK17 6QX





CENTRALLY SITUATED GROUND FLOOR APARTMENT. Very well located within a few minutes walk of Buxton Market Place, a well-presented ground floor apartment within a purpose-built apartment block. UPVC double glazing and electric central heating. Entrance, hall, shower room, kitchen, lounge, 2 bedrooms. Also benefits from a garage. NO ONWARD CHAIN!!

#### Full description

CENTRALLY SITUATED GROUND FLOOR APARTMENT. Very well located within a few minutes walk of Buxton Market Place, a well-presented ground floor apartment within a purpose-built apartment block. UPVC double glazing and electric central heating. Entrance, hall, shower room, kitchen, lounge, 2 bedrooms. This apartment benefits from a garage as well. NO ONWARD CHAIN!!

#### Entrance Hall

Cloaks cupboard, airing cupboard with hot water cylinder, night storage heater.

#### Shower room

Large shower enclosure with electric shower unit, wash hand basin in vanity unit, bidet, low flush wc, UPVC window, night storage heater.

#### Bedroom (12ft x 8ft 3in)

Fitted wardrobes, cupboards, bedside cabinets, night storage heater, UPVC window.

#### Bedroom (10ft 4in x 9ft 6in)

UPVC window, night storage heater.

#### Kitchen (9ft 5inx 7ft 7in)

Oak floor units and round edged work tops, wall cupboards, integrated fridge and washing machine, electric cooker point, extractor fan, stainless steel sink unit, night storage heater, UPVC window.

#### Lounge (15ft x 10ft 2in)

2 night storage heaters, 2 UPVC windows

#### Garage

Single Garage with up and over door.

#### Misrepresentation Act 1967 \ Consumer Protection from Unfair Trading Regulations 2008 and the Business Protection from Misleading Marketing Regulations 2008

Every care has been taken with the preparation of these Particulars but complete accuracy cannot be guaranteed. If there is any point, which is of particular importance to you, please obtain professional confirmation; alternatively, we will be pleased to check the information for you. We have not tested any apparatus, equipment, fixture, fittings or service and so cannot verify they are in working order, fit for their purpose, or within ownership of the sellers. Items shown in photographs are NOT included unless specifically mentioned in writing within the sales particulars. They may however be available by separate negotiation.

These details are prepared as a general guide only, and should not be relied upon as a basis to enter into a legal contract, or commit expenditure. An interested party should consult their own surveyor, solicitor or other professionals before committing themselves to any expenditure or other legal commitments. If any interested party wishes to rely upon any information from the agent, then a request should be made and specific written confirmation can be provided. The agent will not be responsible for any verbal statement made by any member of staff, as only a specific written confirmation should be relied upon. The agent will not be responsible for any loss other than when specific written confirmation has been requested.

All Dimensions are approximate. Items shown in photographs are NOT included unless specifically mentioned in writing within the sales particulars. They may however be available by separate negotiation.

#### Misrepresentation Act 1967 and Consumer Protection Regulation

These details are prepared as a general guide only, and should not be relied upon as a basis to enter into a legal contract, or commit expenditure. An interested party should consult their own surveyor, solicitor or other professionals before committing themselves to any expenditure or other legal commitments. If any interested party wishes to rely upon any information from the agent, then a request should be made and specific written confirmation can be provided. The agent will not be responsible for any verbal statement made by any member of staff, as only a specific written confirmation should be relied upon. The agent will not be responsible for any loss other than when specific written confirmation has been requested.